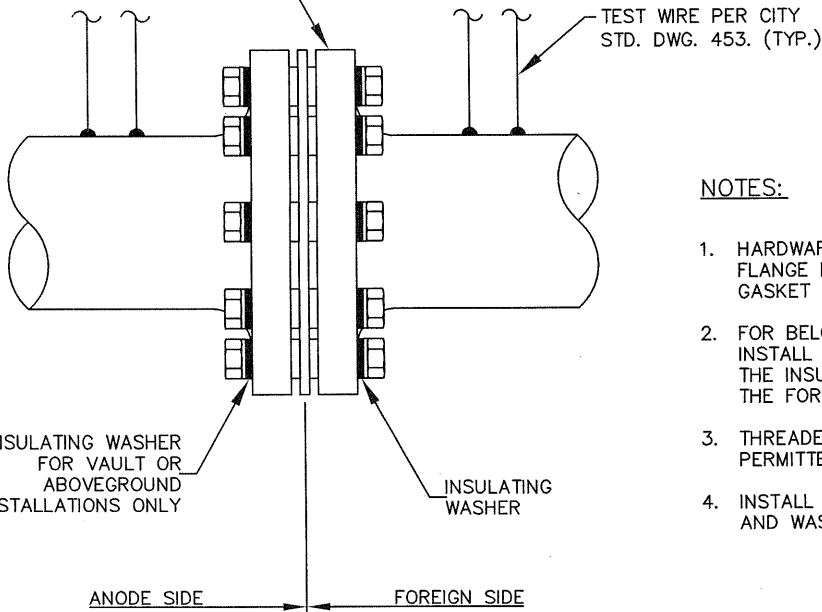


BURIED INSULATING FLANGE COATING

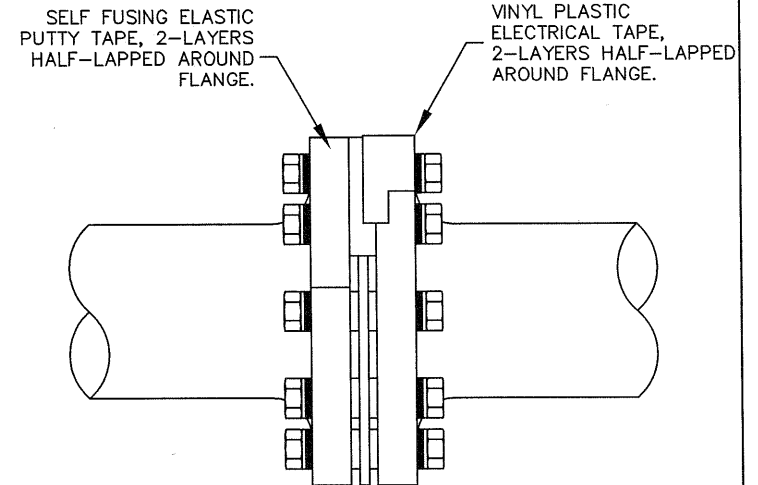
FOR INSULATING FLANGE COATING SEE DETAILS HEREON.

INSULATING FLANGE KIT



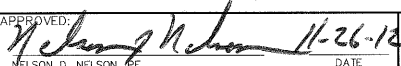


NOTES:

1. HARDWARE QUANTITIES IN INSULATING FLANGE KIT WILL VARY BASED ON GASKET PATTERN AND PIPE SIZE.
2. FOR BELOW GROUND INSTALLATIONS, INSTALL SINGLE-WASHER KITS WITH THE INSULATING WASHERS ONLY ON THE FOREIGN SIDE OF THE FLANGES.
3. THREADED STUD STYLE KITS ARE NOT PERMITTED.
4. INSTALL TYPE 316SS BOLTS, NUTS AND WASHERS.



ABOVE GROUND INSULATING FLANGE COATING

INSULATING JOINT

REVISION			APPROVED:		CITY OF CORONA
NO.	APPROVED	DATE			
			 NELSON D. NELSON, P.E. CITY ENGINEER		
			 TOM KOPER, P.E. DISTRICT ENGINEER, DEPARTMENT OF WATER AND POWER		
				11-26-12 DATE	STD 458
				11-20-12 DATE	SHEET 1 OF 1