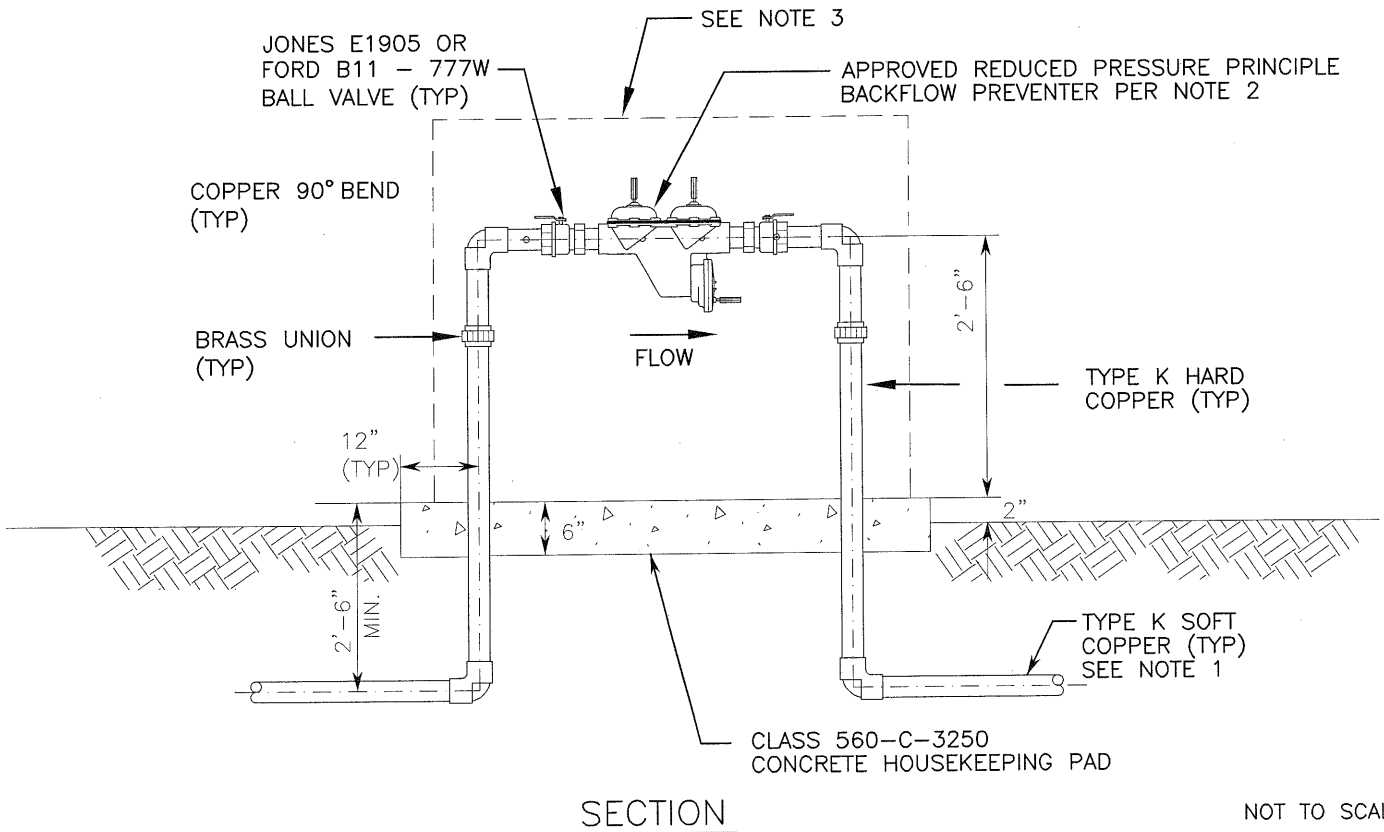
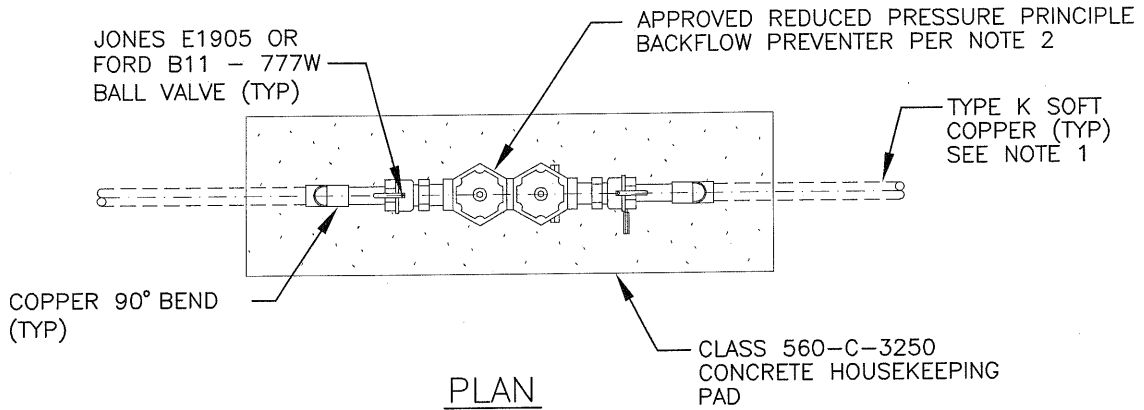


**NOTES:**

1. ALL PIPING BELOW GRADE SHALL BE ENCASED IN A BLUE COLORED 8-MIL POLYETHYLENE SLEEVE EXTENDING TO 2-INCHES ABOVE FINISH GRADE.
2. APPROVED REDUCED PRESSURE PRINCIPLE BACKFLOW PREVENTION DEVICES ARE LISTED IN THE "CITY OF CORONA STANDARD SPECIFICATIONS, APPENDIX B". INSTALLATION OF THE DEVICE SHALL CONFORM WITH ALL REQUIRMENTS OF APPENDIX B.
3. PROVIDE TYPE 316SS EXPANDED METAL CAGE AROUND ASSEMBLY. ATTACH TO CONCRETE HOUSEKEEPING PAD WITH EPOXY GROUTED TYPE 316SS ANCHORS.
4. DETAIL APPLICABLE FOR 3/4-INCH THRU 2-INCH SERVICE.



NOT TO SCALE

**REDUCED PRESSURE PRINCIPLE BACKFLOW ASSEMBLY**

REVISION		
NO.	APPROVED	DATE

APPROVED:

*Nelson D. Nelson* 11-26-2012  
 NELSON D. NELSON, PE, CITY ENGINEER DATE

*Tom Koper* 11-20-12  
 TOM KOPER, PE, DISTRICT ENGINEER, DEPARTMENT OF WATER AND POWER DATE



CITY OF CORONA

STD 428

SHEET 1 OF 1