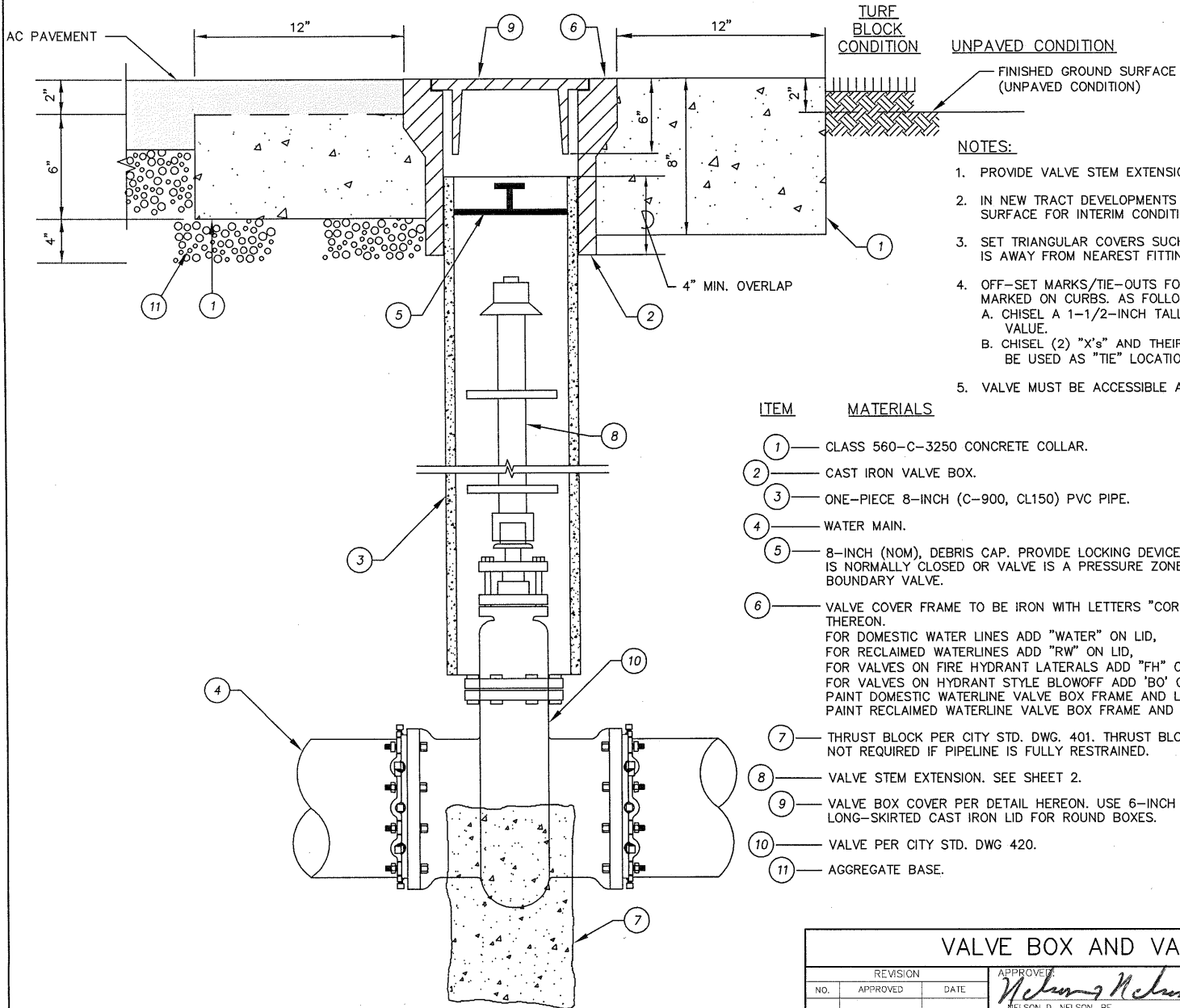


PAVED CONDITION

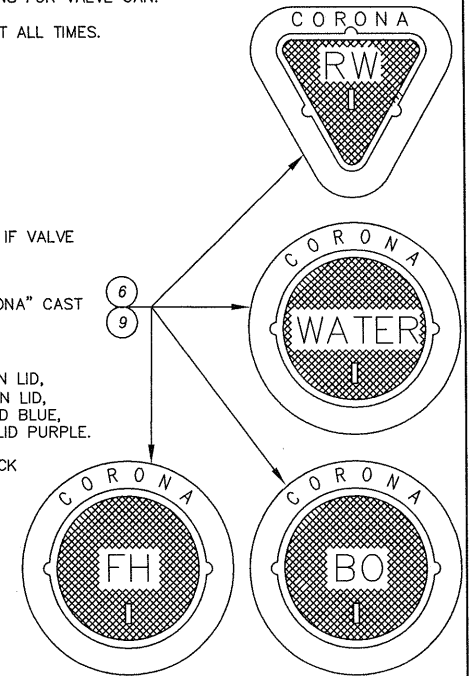


NOTES:



1. PROVIDE VALVE STEM EXTENSION IF DEPTH TO VALVE NUT EXCEEDS 60 INCHES.
2. IN NEW TRACT DEVELOPMENTS EXTEND VALVE RISER 24 INCHES ABOVE GROUND SURFACE FOR INTERIM CONDITIONS.
3. SET TRIANGULAR COVERS SUCH THAT APEX OR TRIANGLE POINT ALONG AXIS OF PIPE IS AWAY FROM NEAREST FITTING.
4. OFF-SET MARKS/TIE-OUTS FOR ALL NEW WATER VALVE INSTALLATIONS SHALL BE MARKED ON CURBS. AS FOLLOWS:  
 A. CHISEL A 1-1/2-INCH TALL "V" IN THE CURB FACE TO INDICATE LOCATION OF VALVE.  
 B. CHISEL (2) "X"s AND THEIR RESPECTIVE DISTANCES IN THE CURB TO BE USED AS "TIE" LOCATIONS FOR VALVE CAN.
5. VALVE MUST BE ACCESSIBLE AT ALL TIMES.

ITEM MATERIALS

- ① CLASS 560-C-3250 CONCRETE COLLAR.
- ② CAST IRON VALVE BOX.
- ③ ONE-PIECE 8-INCH (C-900, CL150) PVC PIPE.
- ④ WATER MAIN.
- ⑤ 8-INCH (NOM), DEBRIS CAP. PROVIDE LOCKING DEVICE IF VALVE IS NORMALLY CLOSED OR VALVE IS A PRESSURE ZONE BOUNDARY VALVE.
- ⑥ VALVE COVER FRAME TO BE IRON WITH LETTERS "CORONA" CAST THEREON.  
 FOR DOMESTIC WATER LINES ADD "WATER" ON LID,  
 FOR RECLAIMED WATERLINES ADD "RW" ON LID,  
 FOR VALVES ON FIRE HYDRANT LATERALS ADD "FH" ON LID,  
 FOR VALVES ON HYDRANT STYLE BLOWOFF ADD "BO" ON LID,  
 PAINT DOMESTIC WATERLINE VALVE BOX FRAME AND LID BLUE,  
 PAINT RECLAIMED WATERLINE VALVE BOX FRAME AND LID PURPLE.
- ⑦ THRUST BLOCK PER CITY STD. DWG. 401. THRUST BLOCK NOT REQUIRED IF PIPELINE IS FULLY RESTRAINED.
- ⑧ VALVE STEM EXTENSION. SEE SHEET 2.
- ⑨ VALVE BOX COVER PER DETAIL HEREON. USE 6-INCH LONG-SKIRTED CAST IRON LID FOR ROUND BOXES.
- ⑩ VALVE PER CITY STD. DWG 420.
- ⑪ AGGREGATE BASE.



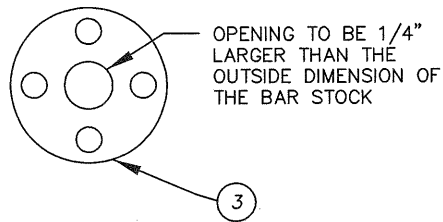
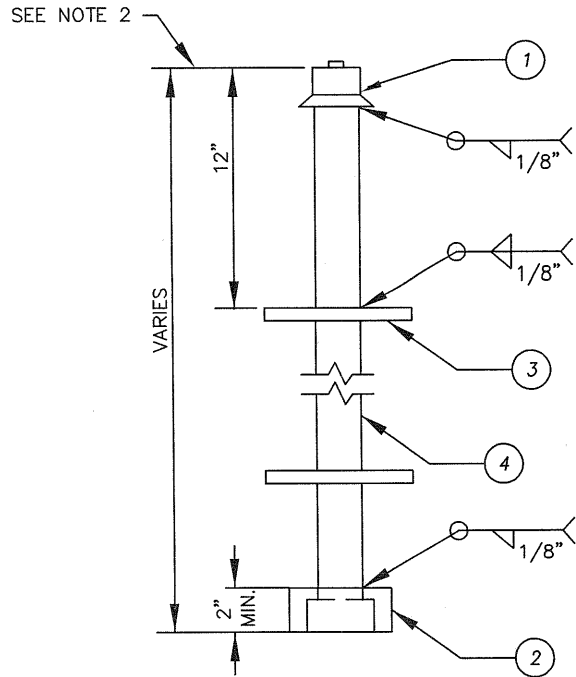
**VALVE BOX AND VALVE STEM EXTENSION**

REVISION			APPROVED		CITY OF CORONA
NO.	APPROVED	DATE	DATE	DATE	
			<i>Nelson D. Nelson</i>	11-26-12	
			NELSON D. NELSON, PE. CITY ENGINEER		
			<i>Tom Koper</i>	11-20-12	
			TOM KOPER, PE. DISTRICT ENGINEER, DEPARTMENT OF WATER AND POWER		

STD 422

SHEET 1 OF 2

FINISH SURFACE




ITEM MATERIALS

- 1 — AWWA 2-INCH SQUARE OPERATING NUT
- 2 — AWWA SOCKET FOR 2-INCH SQUARE OPERATING NUT
- 3 — 6-1/2-INCH DIA. X 3/16-INCH SPACER PLATE
- 4 — 1-1/4-INCH SOLID, ROUND OR SQUARE STEEL BAR STOCK (PINNED COUPLERS ARE NOT ALLOWED. HOLLOW TUBE OR PIPE ARE NOT ALLOWED.)

NOTES:

1. PROVIDE VALVE STEM EXTENSION WHEN DEPTH TO OPERATING NUT EXCEEDS 60 INCHES (FABRICATE EXTENSION TO FIELD MEASUREMENT — SEE NOTE 2).
2. TERMINATE EXTENSION 24 INCHES TO 36 INCHES FROM FINISHED SURFACE.
3. PROVIDE ADDITIONAL SPACER PLATE(S) WHEN DISTANCE TO BOTTOM SOCKET EXCEEDS 60 INCHES BEYOND LOWEST PLATE.

VALVE BOX AND VALVE STEM EXTENSION

REVISION			APPROVED:		CITY OF CORONA
NO.	APPROVED	DATE		DATE	
			<i>Nelson D. Nelson</i>	11-26-12	 CITY OF CORONA STD 422 SHEET 2 OF 2
			<i>Tom Koper</i>	11-20-12	
			<small>NELSON D. NELSON, PE, CITY ENGINEER</small> <small>TOM KOPER, PE, DISTRICT ENGINEER, DEPARTMENT OF WATER AND POWER</small>		