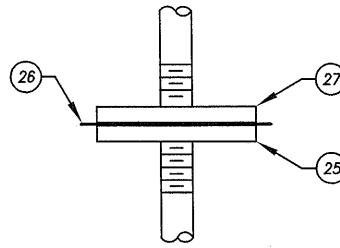
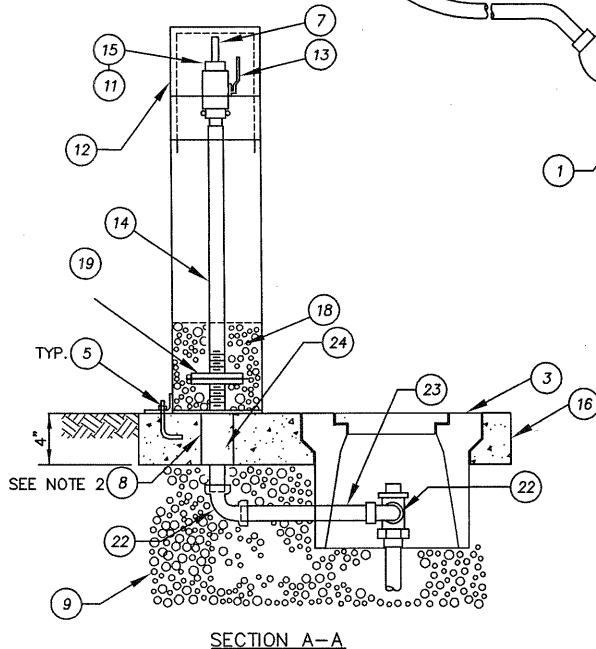


PLAN



FLANGE CONNECTION



SECTION A-A

**NOTES:**


1. ALL HARDWARE SHALL BE TYPE 316SS.
2. FILL ANNULAR SPACE IN SLAB SLEEVE WITH SAND.

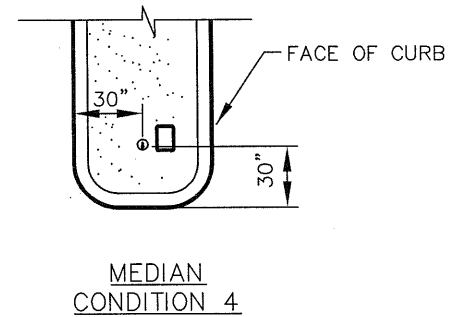
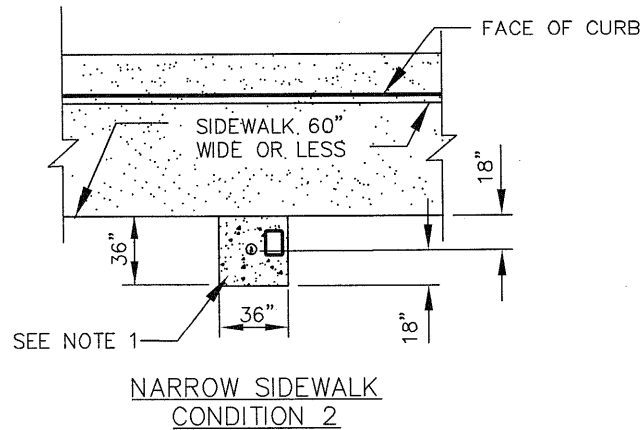
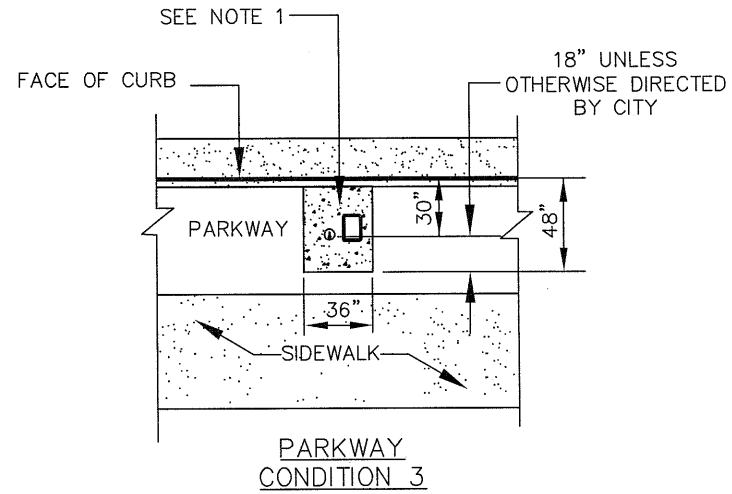
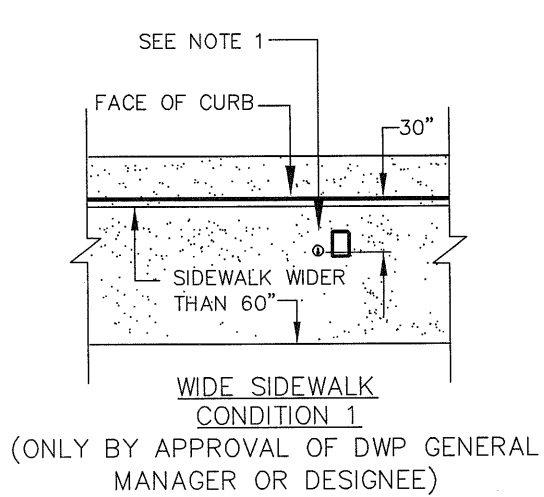
SEE WATER SAMPLE STATION LOCATION PLANS ON SHEET 2

**ITEM MATERIALS**

- 1 1-INCH SERVICE CONNECTION PER CITY STD. DWG. 414.
- 2 1-INCH TYPE "K" SOFT COPPER TUBING PER CITY STD. DWG. 414.
- 3 POLYMER CONCRETE METER BOX PER CITY STD. DWG. 414. READING LID NOT REQUIRED.
- 4 SAWCUT OR CORE DRILL METERBOX FOR 1-INCH PIPE.
- 5 3/8-INCH DIA. X 4-INCH LONG STAINLESS STEEL J ANCHOR BOLT CAST IN SLAB OR EPOXY GROUTED ANCHOR BOLTS (3 EACH AT 120-DEGREES APART WITH STAINLESS STEEL NUTS AND WASHERS) INSTALL WITH RUBBER GROMMET UNDER ANCHOR CLIPS TO PROVIDE 1/4-INCH GAP.
- 6 LOCK HASP.
- 7 3/8-INCH TYPE 316SS TUBING SPIGOT BEND TO 120-DEGREES FOR DOWNWARD OPENING W/CAP.
- 8 2-INCH SCH. 80 PVC SLEEVE.
- 9 3/4-INCH CRUSHED ROCK PLACE TO DEPTH 6-INCHES BELOW METER BOX.
- 10 6-INCH BLUE WARNING TAPE LABELED "POTABLE WATER" 12-INCHES ABOVE SAMPLE SERVICE LATERAL.
- 11 1/2-INCH X 3/8-INCH COPPER TUBE FLARE NUT X MIPT ADAPTER.
- 12 LINEAR LOW DENSITY POLYETHYLENE SAMPLE STATION COVER PAINTED GREEN. 12-INCH DIAMETER X 30-INCHES HIGH WITH CORONA LOGO DECAL LABELED "POTABLE."
- 13 1/2-INCH STAINLESS STEEL TEFLON SEATED BALL VALVE, FIPT X FIPT (ORIENT VALVE HANDLE TOWARD FRONT OF SAMPLE STATION.)
- 14 1/2-INCH TYPE 316SS THREADED NIPPLE.
- 15 1/2-INCH MIPT X FEMALE FLARE FITTING.
- 16 4-INCH THICK 560-C-3250 CONCRETE.
- 17 3 ANCHOR CLIPS WITH 1/2-INCH HOLES AT 120-DEGREE SPACING.
- 18 3/4-INCH GRAVEL/12-INCHES DEEP IN BOTTOM OF CAN.
- 19 FLANGE CONNECTION. SEE DETAIL THIS SHEET.
- 20 1-INCH METER NUT BY FIPT ADAPTER.
- 21 1-INCH RED BRASS NIPPLE, THREADED BOTH ENDS, 6 INCHES LONG.
- 22 1-INCH BRASS 90-DEGREE BEND FIPT X FIPT.
- 23 1-INCH RED BRASS NIPPLE, THREADED BOTH ENDS.
- 24 1-INCH RED BRASS NIPPLE, THREADED BOTH ENDS, 10 INCHES LONG.
- 25 BRASS COMPANION FLANGE.
- 26 FLANGE INSULATING KIT PER CITY STD. DWG. 458.
- 27 TYPE 316SS COMPANION FLANGE.

**WATER SAMPLE STATION**


REVISION			APPROVED		CITY OF CORONA
NO.	APPROVED	DATE		DATE	
			<i>Nelson &amp; Nelson</i>	11-2-18	
			NELSON D. NELSON, P.E. CITY ENGINEER		
			<i>Tom Koper</i>	11-20-18	STD 404
			TOM KOPER, P.E., DISTRICT ENGINEER, DEPARTMENT OF WATER AND POWER		SHEET 1 OF 2



WATER SAMPLE STATION LOCATION PLANS

NOTES:

1. REPLACE SIDEWALK PER CITY STD. 103-00 OR CONSTRUCT 48-INCH x 36-INCH x 6-INCH THICK CONCRETE PAD WITHIN PARKWAY. SEE WATER SAMPLE STATION LOCATION PLANS ABOVE FOR APPLICABLE CONDITION.
2. DO NOT CONSTRUCT WATER SAMPLE STATION CLOSER THAN 10 FEET TO DRIVEWAY RETURN WITHOUT PRIOR APPROVAL BY DWP GENERAL MANAGER OR DESIGNEE.
3. PROVIDE 10-FOOT SEPARATION WITH ALL SEWER AND RECLAIMED WATER FACILITIES.

REVISION			APPROVED:		CITY OF CORONA
NO.	APPROVED	DATE		DATE	
			<i>Nelson D. Nelson</i>	11-21-12	 CITY OF CORONA STD 404 SHEET 2 OF 2
			<i>Tom Koper</i>	11-20-12	
			NELSON D. NELSON, PE, CITY ENGINEER TOM KOPER, PE, DISTRICT ENGINEER, DEPARTMENT OF WATER AND POWER		